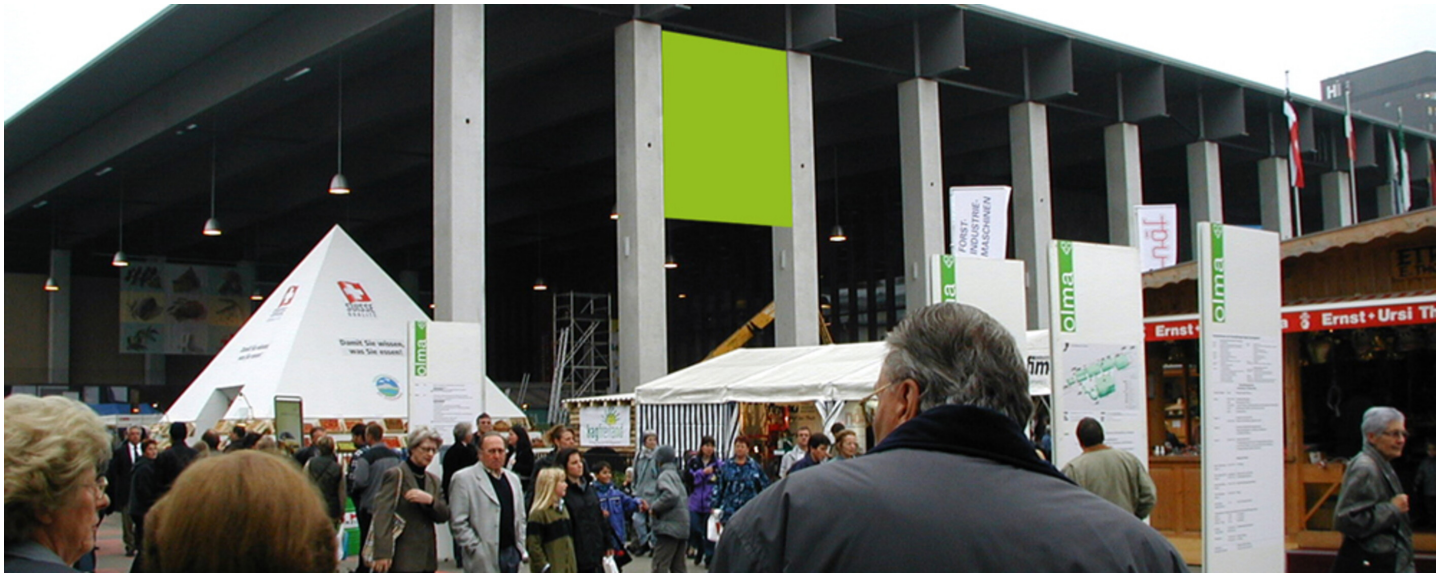


ST. GALLEN, EXHIBITION CENTRE 9.B (NOT AVAILABLE DURING OLMA)

Hall 9 - visible from the entire square



FACTS AND FIGURES

Dimensions	ca. W 4.50 m x H 6.00 m
Total size	ca. 27.00 m ²
Availability	Permanent
Illumination	Not available
Frequency per trade fairs	Varies according to trade show
Visibility	Front, sideways/oblique

LOCATION | DESCRIPTION

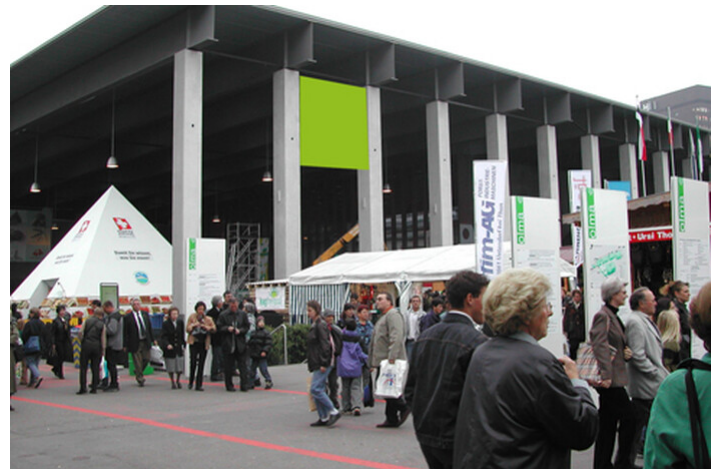
- On Hall 9
- Dominates the entire entrance square
- Visible from main entrance
- Overlooking square
- Good viewing height

PERMISSION

- Outline approval existing, individual artwork requires authorization

RESTRICTIONS

- Non-exhibitors upon request



LOCATION MAP

