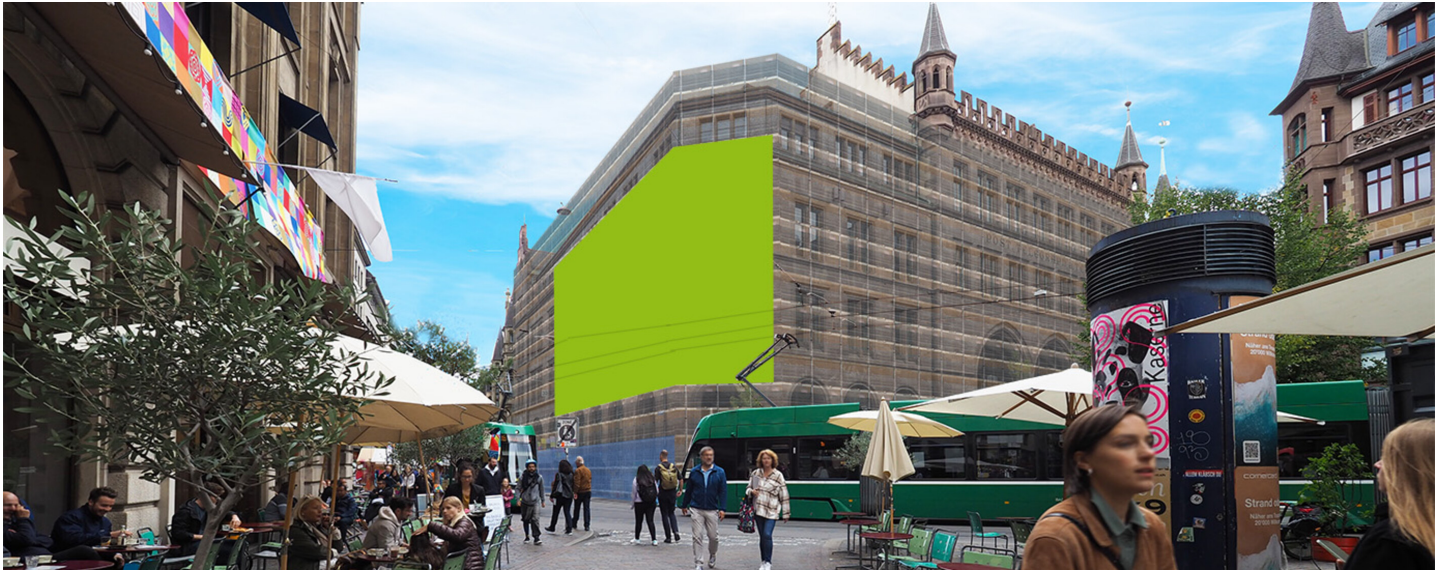


## **BASEL, CORNER GERBERGASSE / RUEDEGASSE**

### **Gerbergasse 13**



#### **FACTS AND FIGURES**

Dimensions	W 27.54 m x H 10.67 m
Total size	293.85 m <sup>2</sup>
Availability	ca. 11/09/2023 till 15/06/2025
Illumination	on request
Frequency per month	ca. 900'000
Visibility	Front, sideways/oblique

#### **LOCATION | DESCRIPTION**

- Premium location in the city centre, between Barfusserplatz and Marktplatz; with a lot of pedestrians
- At the famous and historic facade of the "Post Basel 1"
- Most famous strolling and shopping promenade in Basel
- Surrounded by lots of shops, restaurants, bars, museum, etc.
- Close by stores like Calida, Coop City, Du Parail au Meme, H&M, Läckertli Huus, Maison Oris, PkZ, Seiler Juwelier, etc.
- On various tram lines / Highly visible diagonally advertisement
- Entire cover of the facade in Planing / Illumination on request

#### **PERMISSION**

- Outline approval existing, approval of the building permit through the authorities still pending.

#### **RESTRICTIONS**

- No restrictions concerning the number of words
- No alcohol, tobacco, sex and political advertisement as well as for competitors in the investment foundation area, Insurance companies on request



#### **SITUATION PLAN**

[Google Map](#)

Gerbergasse 13