

## BASEL, CAR PARK ENTRY, SURFACE 1



### FACTS AND FIGURES

Dimensions	W 13.00 m x H 1.50 m
Total size	19.50 m <sup>2</sup>
Availability	Permanent
Illumination	yes, car park lighting
Frequency per year	ca. 680'000
Visibility	Front, sideways/oblique

### LOCATION | DESCRIPTION

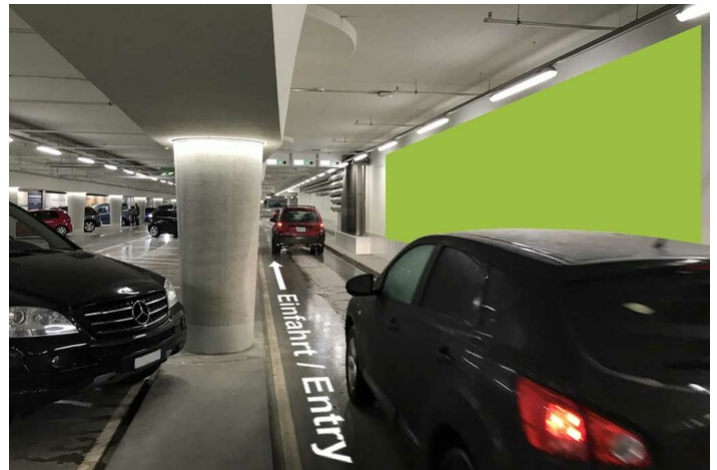
- Car park is right below the train station SBB
- Directly at the car park entrance / exit - long viewing times
- Car park is surrounded by shops, restaurants, bars, museums, hotels, banks, etc.
- Ideal public transport link (Centralbahnplatz)
- More than 400 car park spaces are available
- Most important and biggest car park at the train station SBB
- Visible to all cars entering and exiting
- Smaller areas also available

### PERMISSION

- Outline approval existing, individual artwork requires authorization

### RESTRICTIONS

- No restrictions concerning the number of words
- No alcohol, sex or political advertisement
- Advertisement for tobacco on request



### SITUATION PLAN

[Google Map](#)

Gartenstrasse 150