

BASEL, CAR PARK EXIT

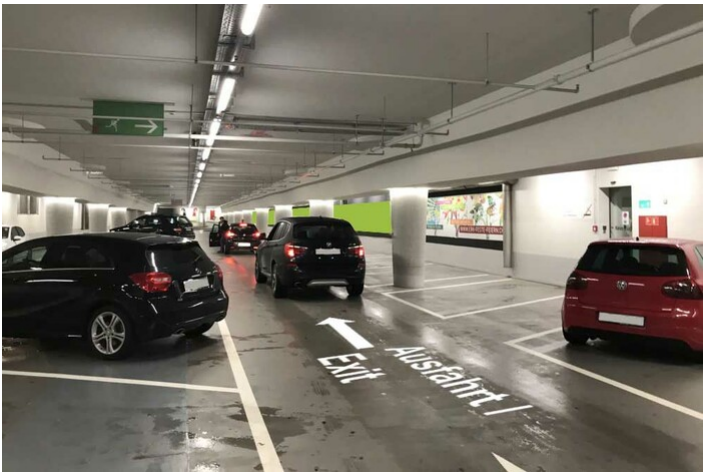


FACTS AND FIGURES	
Dimensions	ca. W 60.00 m x H 1.50 m
Total size	ca. 90.00 m2
Availability	Permanent
Illumination	yes, car park lighting
Frequency per year	ca. 680'000
Visibility	Front, sideways/oblique

- LOCATION | DESCRIPTION**
- Car park is right below the train station SBB
 - Directly at the car park entrance / exit - long viewing times
 - Car park is surrounded by shops, restaurants, bars, museums, hotels, banks, etc.
 - Ideal public transport link (Centralbahnplatz)
 - More than 400 car park spaces are available
 - Most important and biggest car park at the train station SBB
 - Visible to all cars entering and exiting
 - Smaller areas also available

- PERMISSION**
- Outline approval existing, individual artwork requires authorization

- RESTRICTIONS**
- No restrictions concerning the number of words
 - No alcohol, tobacco, sex or political advertisement



SITUATION PLAN

[Google Map](#)
Gartenstrasse 150