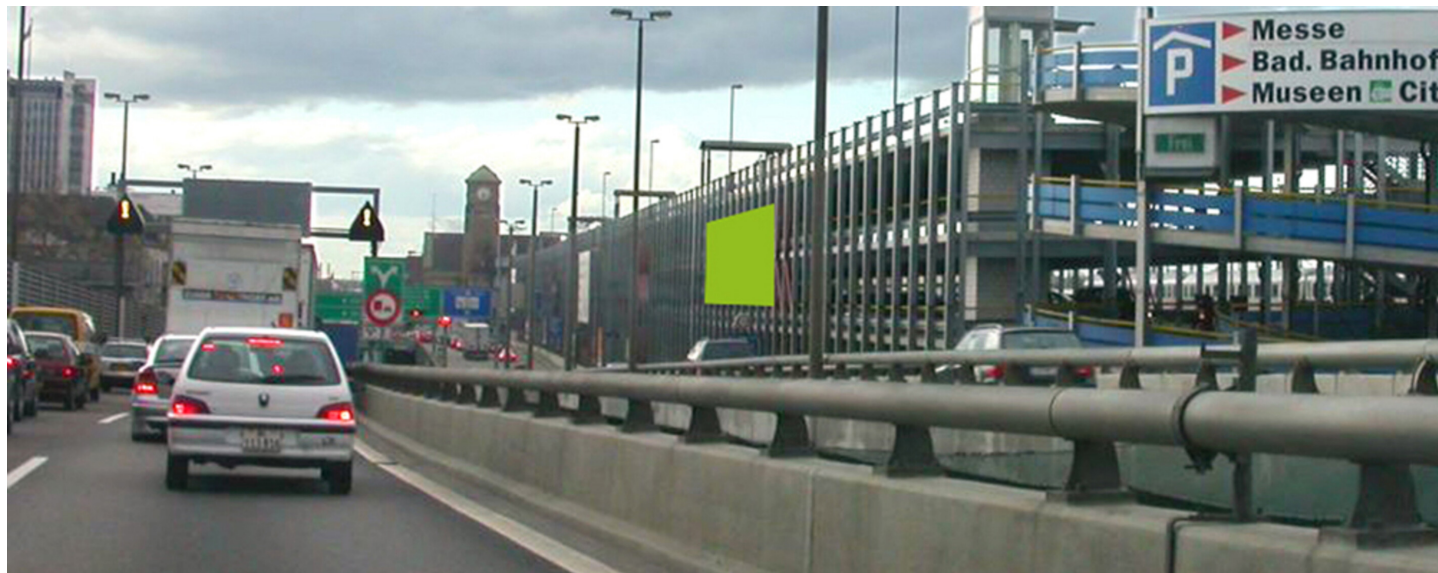


# BASEL, PARKING BADISCHER BHF., MOTORWAY A2, SURFACE 5



FACTS AND FIGURES	
Dimensions	W 15.18 m x H 5.87 m
Total size	89.11 m2
Availability	Permanent
Illumination	yes, Inclusive
Frequency per month	ca. 890'000
Visibility	Sideways/oblique

LOCATION   DESCRIPTION	
■ Unique position: right on the motorway A2/motorway exit city/exhibition	
■ Only few steps away from the exhibition center Messe Basel	
■ Nearby IBM, F. Hoffmann-La Roche, Novartis, Syngenta Tower, McDonalds, Tingly Museum, etc.	
■ In direction of Stuck Shopping Centre, City/Messe, EuroAirport, German and Swiss highway customs	
■ Congestion area year-round	
■ Poster is fitted on eye-level	
■ Multi-lane road traffic	

PERMISSION	
■ Outline approval existing, individual artwork requires authorization	

RESTRICTIONS	
■ No restrictions concerning the number of words	
■ No alcohol, tobacco, sex or political advertisement	



SITUATION PLAN	
<a href="#">Google Map</a>	
Schwarzwaldstrasse 160	